

5203

DOUBLE ENDED SHEAR BEAM LOAD CELL



FEATURES

- Capacities: 1K to 75Klbs
- Environmental protection: IP67 (DIN 40.050)
- Material: nickel plated steel
- Center loaded design

OPTIONAL FEATURE

- FM certified versions are available for use in potentially explosive atmospheres

DESCRIPTION

The 5203 is a Double Ended Shear Beam type load cell.

A reliable sealing and mechanical protection of the skin gage area is ensured by the use of potting compound with a metal cover.

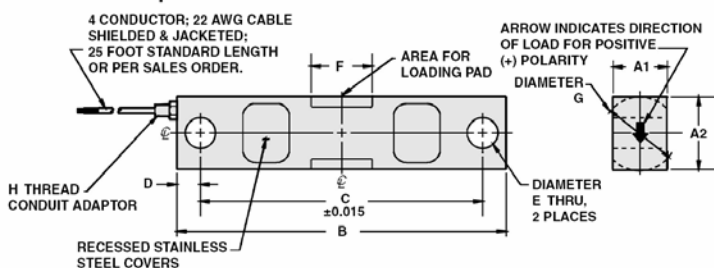
The center loaded design results in minimal sensitivity to off-center forces.

APPLICATIONS

- Silo, tank, hopper weighing
- Custom system designs
- Low capacity vehicle scales

OUTLINE DIMENSIONS in inches

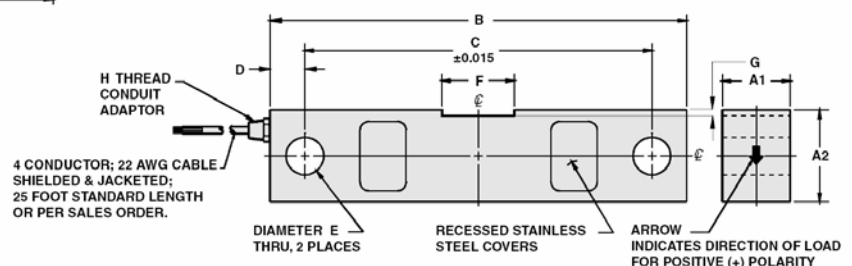
1000 to 50000lb capacities



Wiring

+ Excitation	Red
- Excitation	Black
+ Output	Green
- Output	White

75000lb capacity



CAPACITY	A1	A2	B	C	D	E	F	G	H
1K - 5K	1.25	1.25	7.50	6.25	0.62	0.50	1.22	1.25	1/4-18NPT
10K - 25K	1.44	1.94	8.75	7.50	0.62	0.81	1.62	1.99	1/4-18NPT
35K	1.50	2.50	8.75	7.50	0.62	0.81	1.62	2.50	1/4-18NPT
50K	2.44	2.94	13.50	11.50	1.00	1.31	3.25	2.99	1/2-14NPT
75K	2.44	2.94	13.50	11.50	1.00	1.31	3.12	0.18	1/2-14NPT

Capacities are in pounds.



SPECIFICATIONS

PARAMETER	VALUE	UNIT
Standard capacities (E_{max})	1, 1.5, 2, 2.5, 5, 10, 15, 20, 25, 35, 50, 75	Klbs
Accuracy class	Non Approved - D3	
Rated output ($\approx S$)	3	mV/V
Rated output tolerance	0.008	\pm mV/V
Zero balance	1.0	\pm % FSO
Combined error	0.03	\pm % FSO
Creep error (20 minutes)	0.03	\pm % FSO
Temp. effect on min. dead load output	0.0015	\pm % FSO/5°C (1°F)
Temperature effect on sensitivity	0.0008	\pm % FSO/5°C (1°F)
Maximum safe over load	150	% E_{max}
Ultimate over load	300	% E_{max}
Maximum safe side load	100	% E_{max}
Excitation voltage	10	V
Maximum excitation voltage	15	V
Input resistance	700 \pm 14	Ω
Output resistance	697 \pm 4	Ω
Insulation resistance	\geq 1000	M Ω
Compensated temperature range	-10 to +40 (+14 to +104)	°C (°F)
Operating temperature range	-18 to +65 (0 to +150)	°C (°F)
Element material (DIN)	Nickel plated alloy steel	
Sealing (DIN 40.050 / EN60.529)	IP67	

FSO-Full Scale Output