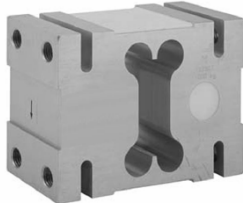


SMT1320

HIGH CAPACITY SINGLE POINT LOAD CELL



FEATURES

- Capacities 1000 - 2000kg
- Aluminum construction
- Single point 1200 x 1200mm platform
- OIML R60 and NTEP approved
- IP66 protection
- Available with metric threads

OPTIONAL FEATURES

- EEx ia IIC T4 hazardous area approval
- FM approval available

DESCRIPTION

Model 1320 is a high capacity single point load cell designed for direct mounting of low profile, high capacity weighing platforms up to 1200 x 1200mm.

Its large platform size simplifies the construction of floor scales, weigh bars, hanging scales and other types of weighing machines with a capacity up to 2000kg.

All load cells are individually adjusted to eliminate corner errors, tested and calibrated to meet OIML specifications.

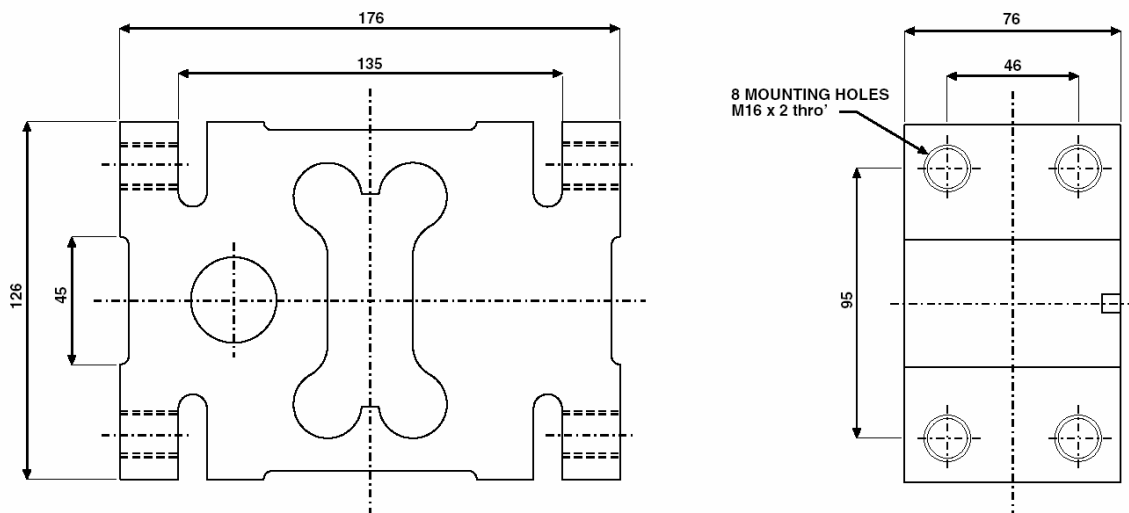
A special humidity resistant coating assures long term reliability.

The two additional sense wires feed back the voltage reaching the load cell. Complete compensation of changes in lead resistance due to temperature change and/or cable extension, is achieved by feeding this voltage into the appropriate electronics.

APPLICATIONS

- Very large platform scales
- Hanging scales
- Check weighing

OUTLINE DIMENSIONS in millimeters



SPECIFICATIONS

PARAMETER	VALUE			UNIT
	NTEP	Non-Approved	C3	
Rated capacity-R.C. (E_{max})	1000, 1500, 2000			kg
NTEP/OIML Accuracy class	NTEP	Non-Approved	C3	
Maximum no. of intervals (n)	3000 single	1000	3000*	
$Y = E_{max}/V_{min}$	1000	3333	10000	Maximum available
Rated output-R.O.	2.0			mV/V
Rated output tolerance	0.2			±mV/V
Zero balance	0.2			+mV/V
Zero Return, 30 min.	0.0330	0.0300	0.0170	±% of applied load
Total Error	0.0200	0.0500	0.0200	±% of rated output
Temperature effect on zero	0.0040	0.0100	0.0023	±% of rated output/°C
Temperature effect on output	0.0010	0.0030	0.0010	±% of applied load/°C
Eccentric loading error	0.0033	0.0025	0.0017	±% of rated load/cm
Temperature range, compensated	-10 to +40			°C
Temperature range, safe	-30 to +70			°C
Maximum safe central overload	150			% of R.C.
Ultimate central overload	300			% of R.C.
Excitation, recommended	10			Vdc or Vac rms
Excitation, maximum	15			Vdc or Vac rms
Input impedance	415±15			Ohms
Output impedance	350±3			Ohms
Insulation resistance	>2000			Mega-Ohms
Cable length	5			m
Cable type	6wire, braided, Polyurethane, dual floating screen			Standard
Construction	Plated (Anodized) aluminum			
Environmental protection	IP66			
Recommended torque	165.0			N*m

* 50% utilization

Wiring schematic diagram

