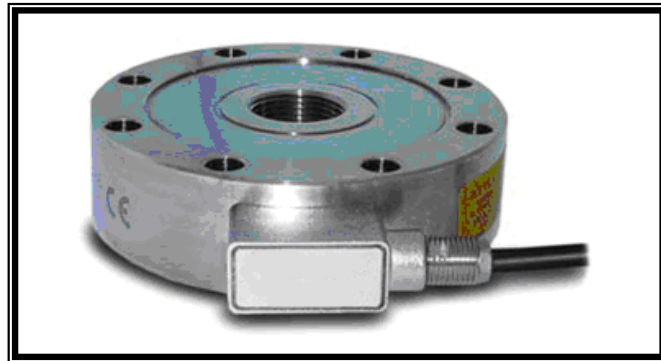


SM4

TENSION COMPRESSION LOAD CELL UNTIL 100 T



ACCESSORIES



RoHS
COMPLIANCE

ISO 376

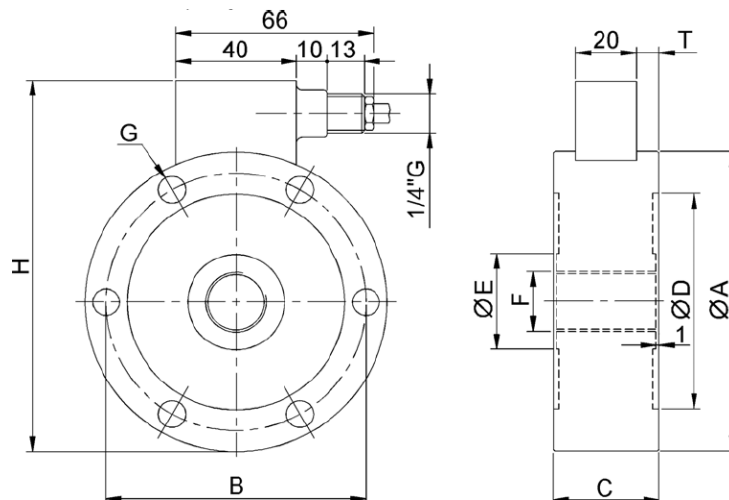
Reference standards:
ISO 376 • ASTM E74



SIT certificate on request

DIMENSIONS (mm.)

LOAD	ØA	B	C	ØD	ØE	F	G	n°G	H	T	KHz ⁽¹⁾
5 kN	100	86	35	72	32	M20X1.5	9	6	121	7.5	2.5
10 kN											2.5
25 kN											4.8
50 kN	127	110	35	92	47	M30X2	10.5	8	149	7.5	3.8
100 kN											5.8
200 kN	165	138	50	108	62	M42X3	17	12	188	15	5.7
300 kN										7.3	
500 kN			20							9.8	
750 kN	230	185	80	145	98	M60X3	26	12	254	30	18.2
1000 kN											18.2



SENSEL MEASUREMENT

41, rue des laitières – 94300 VINCENNES - FRANCE

Tél. : 09 50 87 91 52 - www.sensel-measurement.com - contact@sensel-measurement.com
S.A.R.L au capital de 7500 Euros - SIRET 502 277 908 00013 - APE 7490 - N° TVA : FR40502277908

TECHNICAL DATA

Accuracy class: ISO 376	1				
NOMINAL LOAD	5-10-25kN	50-100kN	200-300kN	500kN	750kN 1000kN
RELATIVE ERRORS (at reading)					
a) repeatability 0°-120°-240° (b)	≤ ±0.145% ⁽¹⁾				
b) interpolation (fc)	≤ ±0.090% ⁽¹⁾				
c) reversibility (u)	≤ ±0.240% ⁽¹⁾				
d) zero (fo)	≤ ±0.030% F.S.				
LINEARITY	≤ ±0.05% F.S.				
HYSTERESIS	≤ ±0.05% F.S.				
TEMPERATURE EFFECT (10°C)					
a) on zero	≤ ±0.028% F.S.				
b) on sensitivity	≤ ±0.024% F.S.				
EFFECT OF TRANSVERSE LOAD:					
a) at 10% of nominal load	≤ ±0.030% F.S.				
NOMINAL SENSITIVITY	2mV/V ⁽²⁾				
SENSIVITY TOLERANCE	≤ ±0.1% F.S.				
INPUT RESISTANCE	800 ± 20Ω				430 ± 20Ω
OUTPUT RESISTANCE	705 ± 2Ω				352 ± 2Ω
INSULATION RESISTANCE	> 5 GΩ				
ZERO BALANCE	≤ ± 1% F.S.				
RECOMENDED SUPPLY VOLTAGE	10 V				
NOMINAL SUPPLY VOLTAGE RANGE	1-15 V				
MAXIMUM SUPPLY VOLTAGE	18 V				
MECHANICAL LIMIT VALUES REFERRED TO NOMINAL LOAD :					
a) service load	120%				
b) max permissible load	150%				
c) breaking load	>300%				
d) max transverse load	100%				
e) max permissible dynamic load	75% ⁽³⁾				
DISPLACEMENT AT NOMINAL LOAD	~0.06 mm	~0.09 mm	~0.17 mm	~0.17 mm	~0.23 mm
REFERENCE TEMPERATURE	+23°C				
TEMPERATURE NOMINAL RANGE	-10 / +40 °C				
SERVICE TEMPERATURE	-10 / +70 °C				
STORAGE TEMPERATURE	-20 / +80 °C				
WEIGHT	1.60 kg	2.45 kg	5.80 kg	6.80 kg	16.5 kg
PROTECTION CLASS (EN 60529)	IP67				
EXECUTION MATERIAL	Acciaio Inox / Stainless Steel				
CABLE LENGTH	5 m				
FIXING SCREWS					
a) diameter	M8	M10	M16	M16	M24
b) resistance class	12.9	12.9	12.9	12.9	12.9
c) tightening torque	40 Nm	70 Nm	368 Nm	368 Nm	460 Nm

(1) Percentage errors referred to reading, min. 1/10 of nominal load.

(2) Tests and calibrations performed in **COMPRESSION** with the dynamometer mounted on a bearing support with correctly tightened clamping screws.

(3) The dynamic load must be applied to the dynamometer central thread and not to the external fixing rim.

ELECTRICAL CONNECTIONS

PVC 105°C shielded cable, Ø 5.2mm
with 4 tinned Ø 0.35mm² conductors

* Connected to the body of the sensor

